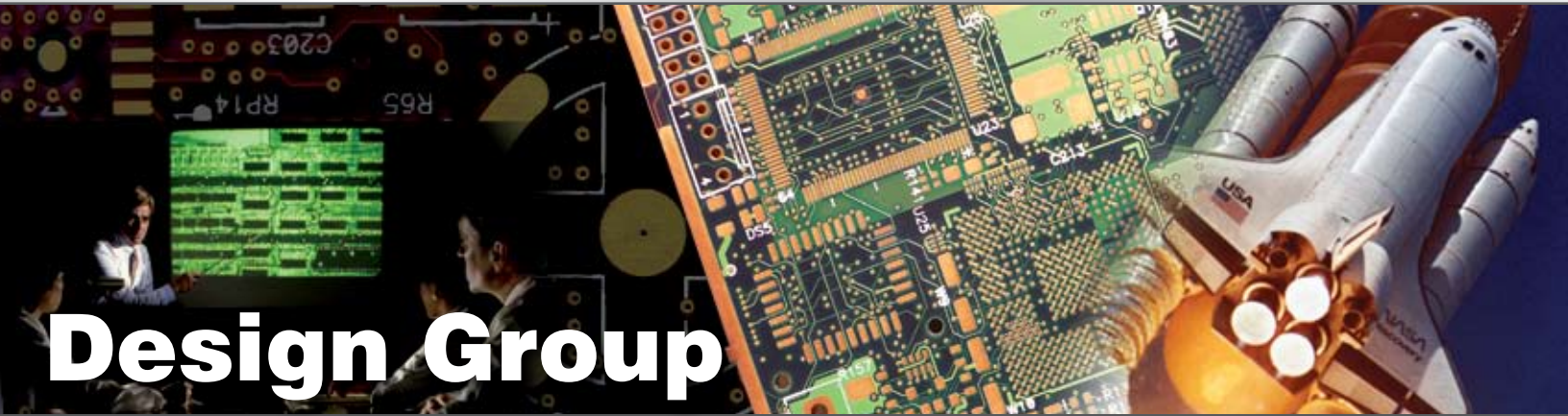




C O R E T E C

how far, how fast?™

Coretec's award winning Design Team delivers world class interconnect design services.



Design Group

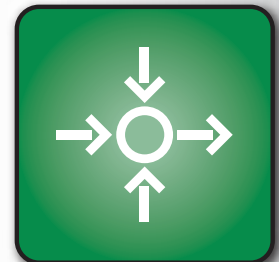
Enabling Rapid Manufacturing Via Intelligent Design



Time Critical



Technology



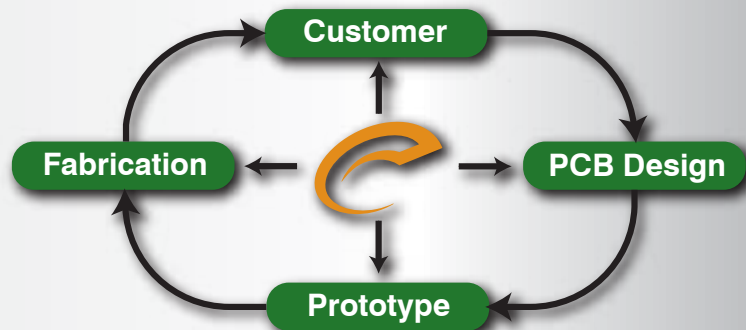
Value Added Services

Compliment Your Design Team With Our Capabilities

Complex, high-reliability interconnects
Rigid/Rigid-Flex designed for manufacturability
and testing in demanding assembly environments.

Special features including:

- ✓ HDI Microvia in Pad
- ✓ Exotic Materials
- ✓ Controlled Impedance
- ✓ Buried and Blind Vias
- ✓ Step Builds
- ✓ Thermal Management



www.coretec-inc.com

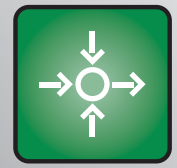
519-489-2142



Time Critical



Technology



Value Added Services

Design Group Capabilities

Information Flow

Quoting Requirements:

Schematic
Bill of Materials
Mechanical Drawing
Engineering Design Notes
Layout Requirements

Customer Sign-off Points:

Mechanical and Part Creation
Build
Placement
Routing
Final Gerber Files

Deliverables:

Native Format Design Files
274X Gerber Files
ODB++ (on request)
Acrobat PDF of Gerber Files
AutoCAD DXF of Gerber Files
XYZ Pick & Place ASCII Files
Assembly Files
Set of Laser Prints
All Files on CD

Software:

Mentor Graphics Expedition
Mentor Graphics PowerPCB
Mentor Graphics BlazRouter
Mentor Graphics Dx Designer
Mentor Graphics PowerLogic

Differentiators:

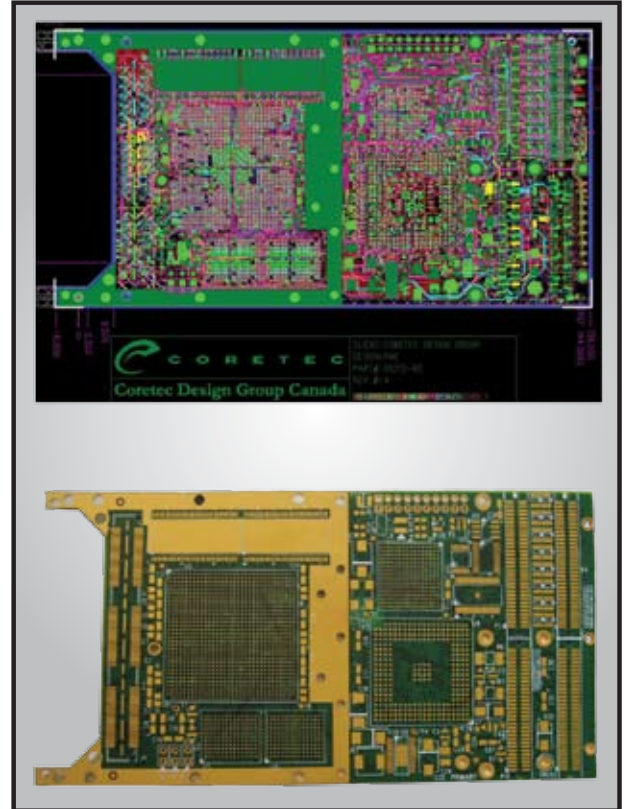
In-House and International Designers
All IPC Certified Designers
Design for Manufacturability
Extensive PCB Fabrication Training
200+ Check List
Quality Centric

Capabilities & Experience:

Rigid/Flex Multilayer
PCMCIA, cPCI, PCIe
Thermal Management
HDI Microvia
Design for EMI & EMC
Blind & Buried Vias
Design for Testability
Controlled Impedance
Differential Pairs
Digital & Analog High Speed
Exotic Materials
BGA & micro BGA
Embedded Passives
Step Builds
Integrated Heat Sinks
RoHS Compliance

Valued Customers:

Alazar Technologies Inc.
Curtiss Wright Controls
Dialogic Corporation
Goodrich
Hispano-Suiza Canada
Lockheed Martin
Luxell Technologies Inc.
MDA Space & Advanced Robotics
Moore Research Center
Nuvation
Sandvine
Teradyne
WMS Gaming Inc.



Canadian Facilities

Corporate Headquarters
8150 Sheppard Avenue East
Toronto, ON M1B 5K2
Phone: 1 416-208-2100

Coretec Toronto

2020 Ellesmere Road
Toronto, ON M1H 2Z8
Phone: 1 416-208-2100

European Sales Office

Unit 1, The Granary Building
Millow, Nr Duncton
Bedfordshire, UK SG18 8RH
Phone: +44 (0) 1767 602 800
Mobile: +44 (0) 7974 344 104

US Facilities

Coretec Denver Inc.
10570 Bradford Road
Littleton, CO 80127
Phone: 1 303-972-4105

Coretec Cleveland Inc.

7 Ascot Parkway
Cuyahoga, OH 44223
Phone: 1 330-572-3400

US Sales Office

253 5th Avenue S.E.
Osseo, MN 55369
Phone: 1 763-493-8725

Coretec Design Group

3-1770 King Street East
Kitchener, ON N2G 2P1
Phone: 1 519-489-2142, x203
design@coretec-inc.com
Rich Buitendyk, Design Group Manager

www.coretec-inc.com



C O R E T E C

how far, how fast?™